

100%

divert rate from landfill and traditional disposal routes.

56%

cost saving achieved using the ProjectDIVERT initiative.

188kg

carbon saved by locating nearby reuse opportunities.

ISG, TIM HORTON'S HARLOW:

The Client

ISG, a global construction specialist, is committed to promoting their sustainability agenda through its business operations and sustainable business goals. With a mission to drive revolutionary change in the industry, ISG have many similar values to Encore, one of which is to support communities who's lives are improved for knowing us and at no extra cost to them.

The Challenge

The site consisted of a restaurant and drive thru refurbishment, including all existing fixtures, fittings, full internal refurbishment, and car park alterations. Included within the works involved an element of landscaping, which on completion ISG identified a surplus amount of turf which was no longer needed.

The Solution

ISG turned to Encore Environment to find a home for the surplus turf via their extensive ProjectDIVERT database. Our team of dedicated waste co-ordinators needed to move fast due to the turf having already been on site for some days, within the same day we had secured a recipient for the excess

// I'm delighted we were able to support Little Pardon Primary Academy through Encore's Project DIVERT. To see this material go to a good cause and to enhance their pond is wonderful news. //

- Scott Goodman, Senior Project Manager, ISG

turf. The turf was donated to Little Pardon Primary Academy- a nearby school located only 1.7 miles away. Not only saving site cost, and carbon, but also enhancing social value - a win win situation for everyone involved.

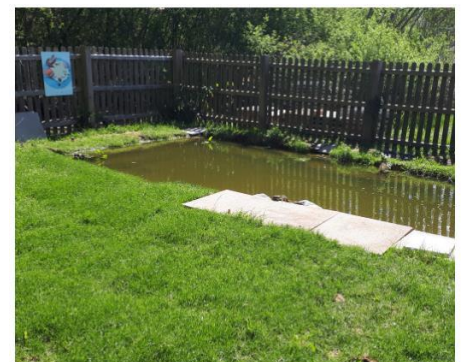
The Results

Encore achieved a 100% diversion rate and were able to DIVERT the surplus turf to those in need and therefore avoiding unnecessary skips on the road. Not only did this approach

save costs by 56% but it also saved 188kg of carbon by finding new ways to reuse and recycle unwanted site material.

// The turf came at the right time, enabling us to refresh our pond area. Thank you very much! //

- Little Pardon Primary Academy



Refurbished turf area at Little Pardon Primary Academy



WWW.ENCORE-ENVIRONMENT.COM

ENCORE ENVIRONMENT LTD, UNIT 1, HOME FARM, SYWELL, NORTHAMPTON, NN6 0BQ
TEL: 01604 496987 EMAIL: INFO@ENCORE-ENVIRONMENT.COM